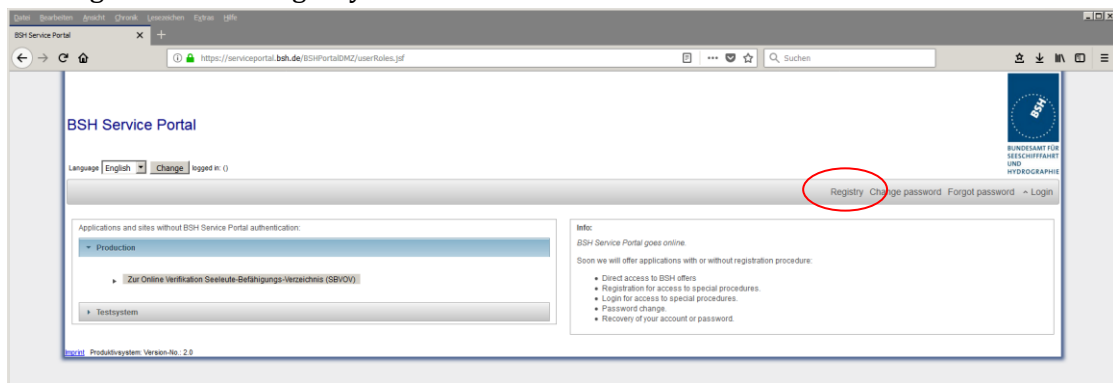


# ACCESS TO THE RAVE DATABASE

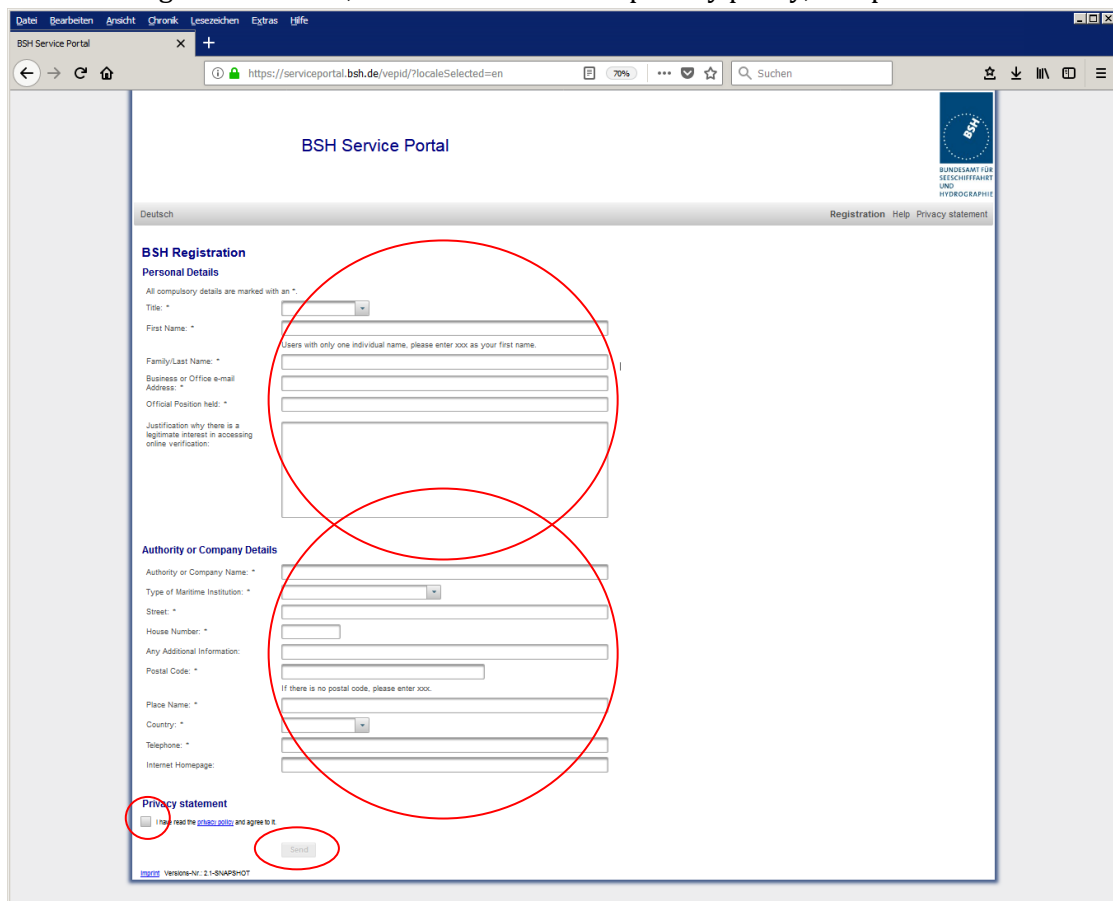
The research initiative RAVE (Research at alpha ventus) carries out research and development work on the offshore test field alpha ventus. The measurement service project, coordinated by the Federal Maritime and Hydrographic Agency (BSH), carries out measurements in various areas (load conditions, construction and operating noise, vibration, etc.) of offshore wind turbines. The overall goal is to provide comprehensive data for all research projects. In order to make the data available to the users, a database was developed.

The following document describes how to access the database.

1. Open the BSH Service Portal <https://serviceportal.bsh.de> in your browser and register by clicking the button "Registry".

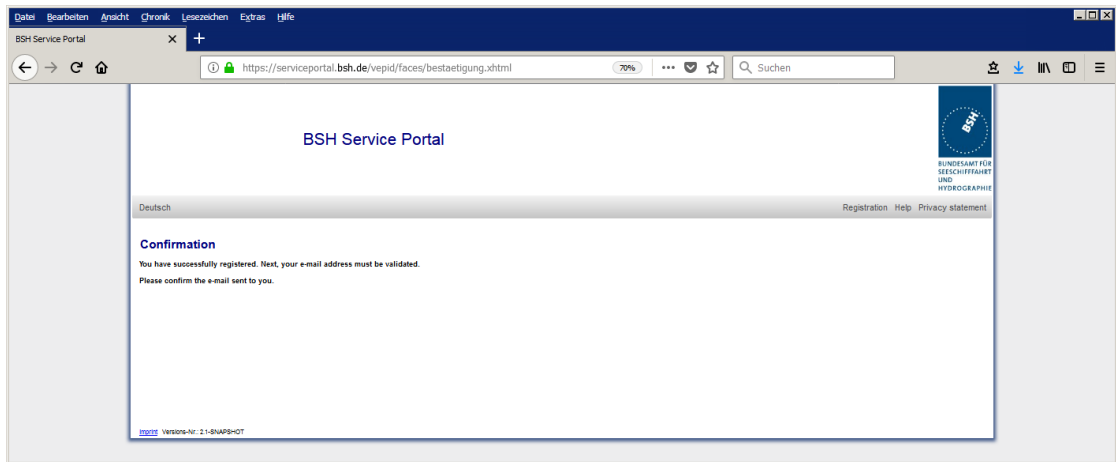


2. Fill in the registration form, read and confirm the privacy policy, and press "Send".



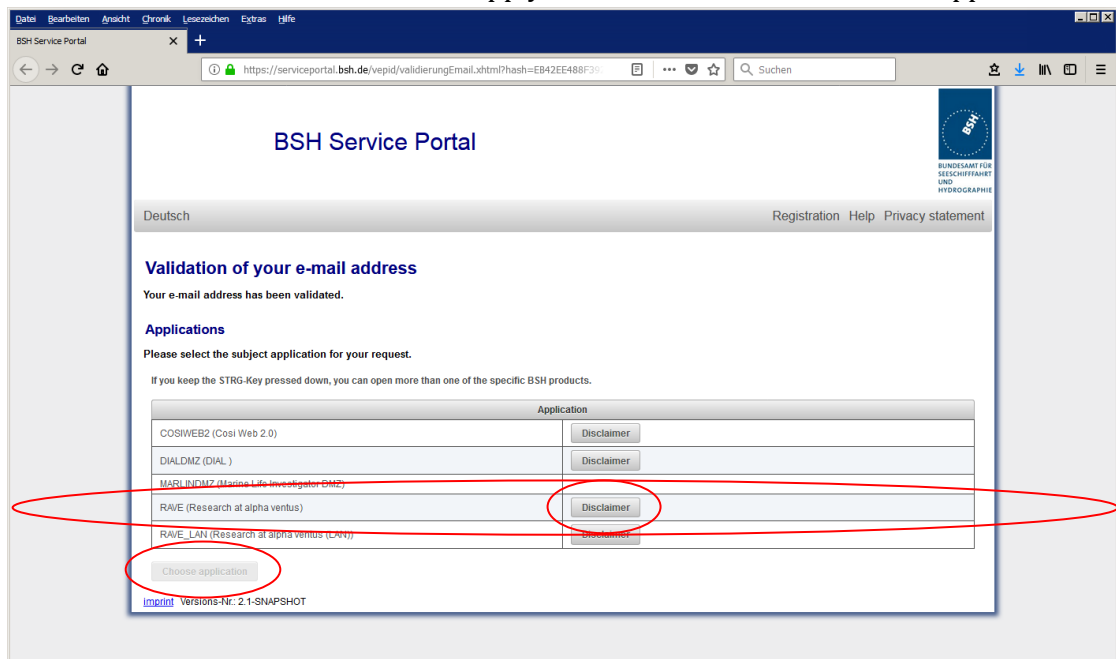
Since you may also have access to confidential data, we reserve the right to verify the accuracy of your information.

3. A confirmation will appear in the browser.

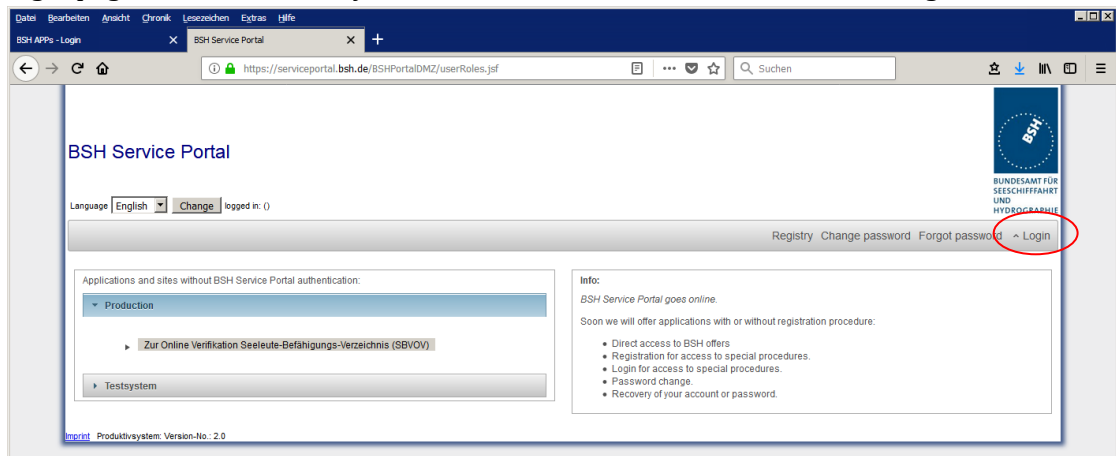


Check your e-mail inbox and follow the link provided.

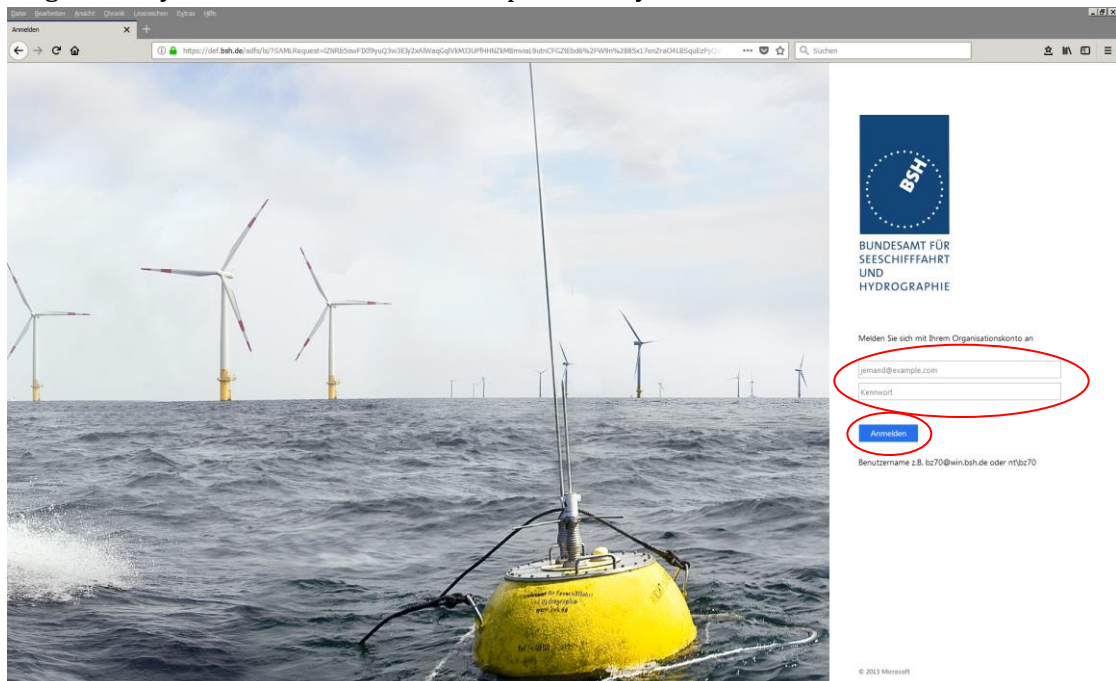
4. Read and confirm the disclaimer and apply for the activation for the RAVE application.



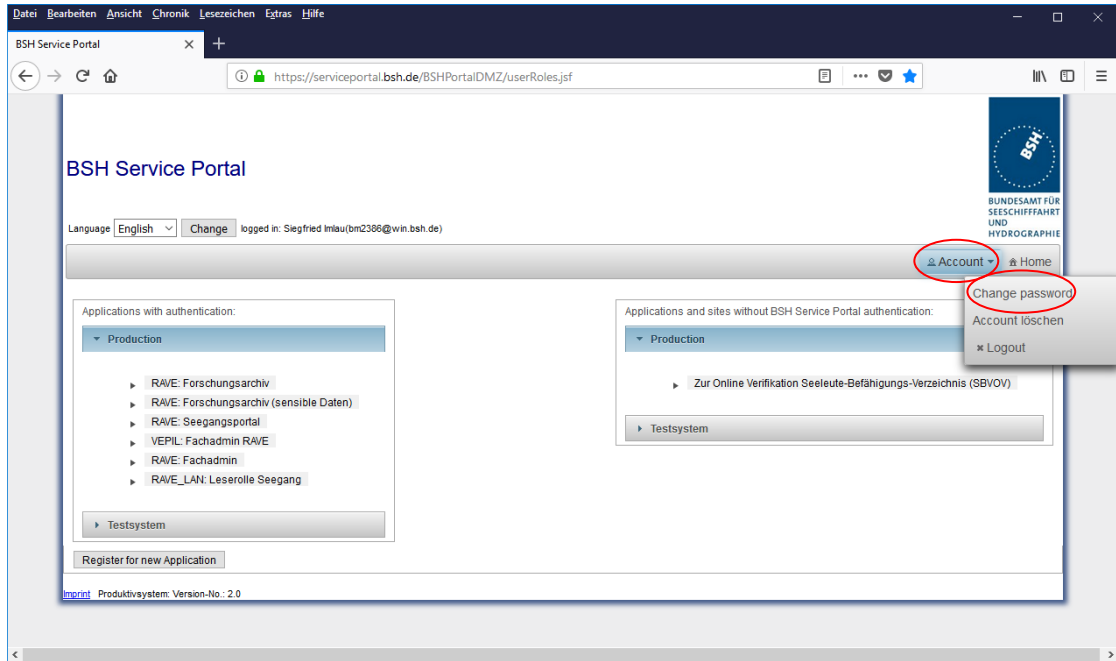
5. After approval by the administrator you will receive two emails. One with a link to the login page, the second with your access data. Follow the link and click “Login”.



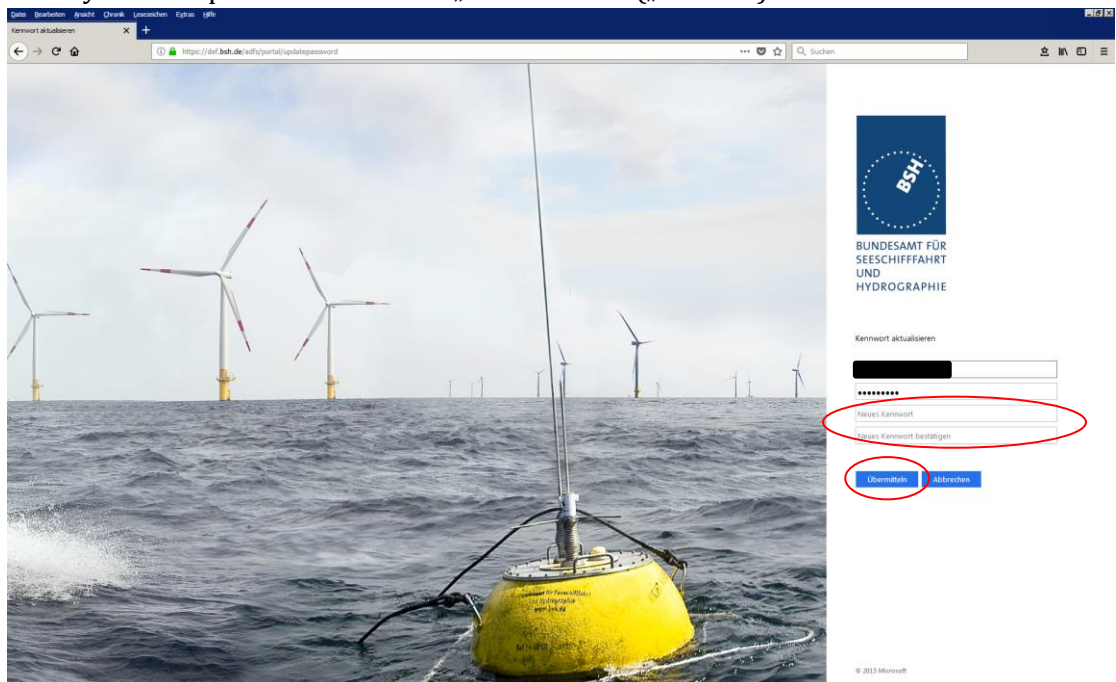
6. Log in with your email address and the password you received.



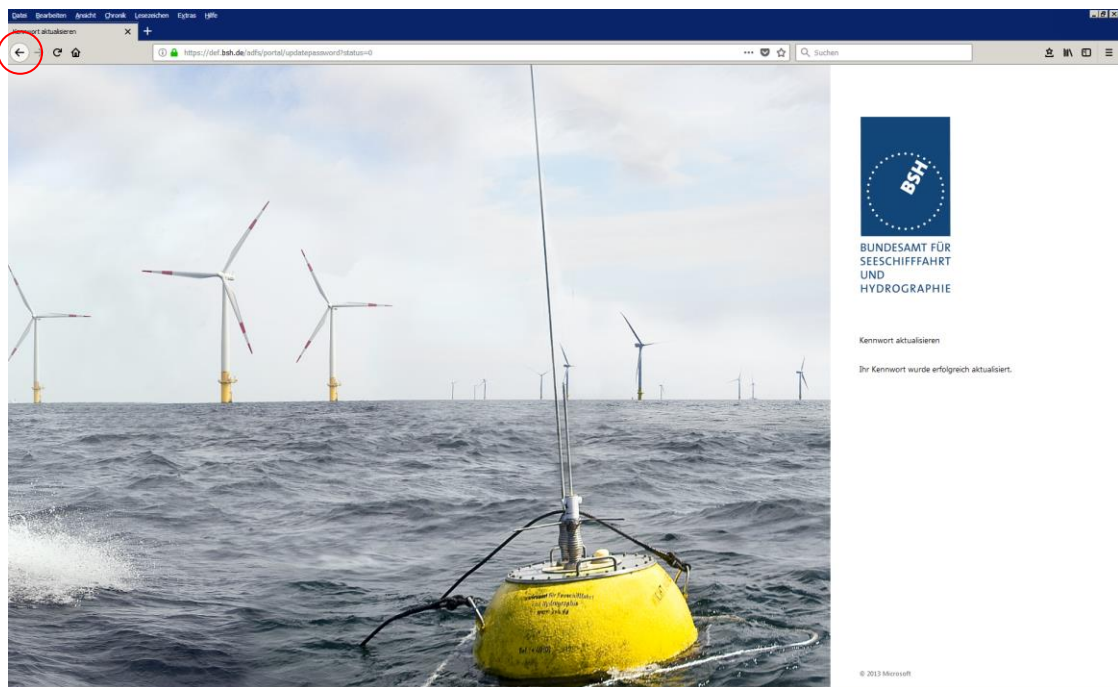
7. Change your password by clicking “Account” → “Change password”.



8. Enter your new password and click „Übermitteln“ („Submit“).



9. You will receive a confirmation. When you go back two pages you are back on the BSH Service Portal.



10. By clicking on “RAVE: Forschungsarchiv” you get access to the RAVE portal and can access the data.

