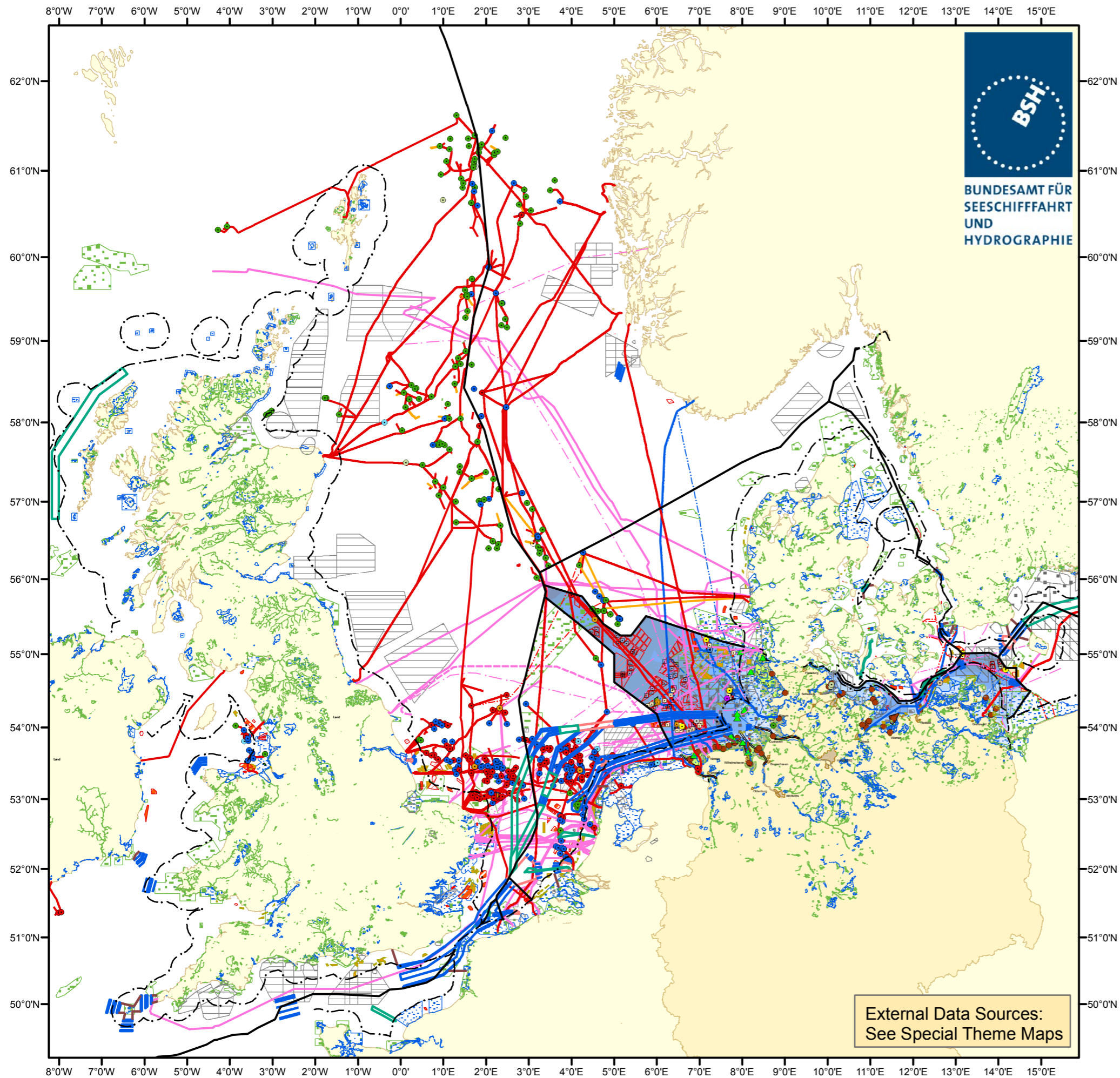


# North Sea: Existing and Perspective Uses and Nature Conservation



External Data Sources:  
See Special Theme Maps

**BSH**  
BUNDESAMT FÜR SEESCHIFFFAHRT UND HYDROGRAPHIE

**Boundaries**

- Continental Shelf/EEZ
- · - Territorial Sea
- - - International Boundary

**Maritime Features**

- Traffic separation zone
- Deep water route
- Precautionary area
- Inshore traffic zone
- Shipping lane, recommended
- Shipping lane, not classified
- ▨ Prohibited Area
- ▨ Roadstead

**Platforms**

- Measurement Platform, in use
- Measurement Platform, under construction
- Measurement Platform, approved
- Measurement Platform, planned
- Petroleum Platform, in use
- Petroleum Platform, out of use
- Natural Gas Platform, in use
- Compressor Platform, in use
- Unclassified, in use
- Unclassified, approved
- Unclassified, out of use
- E-Transformer, in use
- E-Transformer, under construction
- E-Transformer, approved
- E-Transformer, planned
- E-Converter, under construction
- E-Converter, planned

**Pipelines**

- Natural Gas Pipeline, in use
- · - Natural Gas Pipeline, under construction
- - - Natural Gas Pipeline, approved
- · - Natural Gas Pipeline, planned
- Hydrocarbons Pipeline, in use

**Cables**

- Data Cable, in use
- · - Data Cable, planned
- - - Data Cable, out of use
- · - Data Cable, unknown
- High Voltage Cable, in use
- · - High Voltage Cable, under construction
- - - High Voltage Cable, approved
- · - High Voltage Cable, planned

**Offshore Windfarms**

- ▨ planned
- under construction
- ▨ approved
- in use
- ▨ denied

**Sediment Extraction**

- in use
- ▨ approved
- ▨ planned
- presently out of use

**Dumping Grounds**

- Dredged Material, in use
- ▲ Ammunition, out of use
- ▨ Dredged Material, in use
- ▨ Dredged Material, out of use
- ▨ Ammunition, out of use

**Military Practice Area**

- ▨ Unclassified
- ▨ Restricted Area
- ▨ Torpedo Exercise
- ▨ Submarine Exercise
- ▨ Firing Danger
- ▨ Mine Hunting Practice
- ▨ Air Force Exercise

**Nature Conservation**

- ▨ Natura2000 SCI
- ▨ Natura2000 SPA

**Mariculture**

- Culture Area

**Preferred Areas**

- ▨ Offshore Wind Energy

Geodetic Datum: WGS 84  
Map Projection: Mercator (54°N)  
BSH / M5 - 17.04.2012