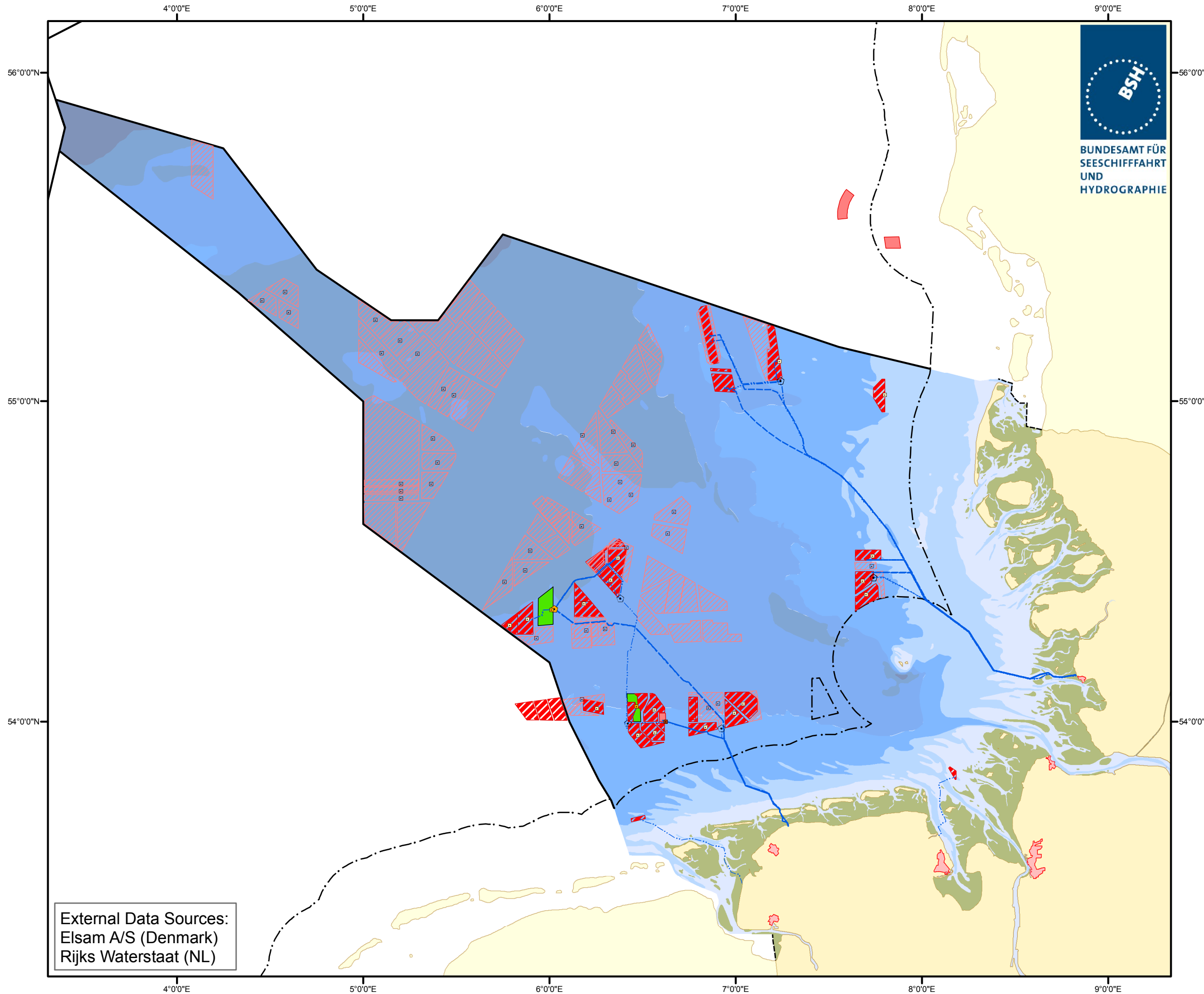


# North Sea: Offshore Windfarms



- Offshore Windfarms**
- in use
  - under construction
  - approved
  - planned
- Platforms**
- E-Transformer, in use
  - E-Transformer, under construction
  - E-Transformer, approved
  - E-Transformer, planned
  - E-Converter, under construction
  - E-Converter, planned
- Cables (Offshore Windfarms)**
- in use
  - under construction
  - approved
  - planned
- Boundaries**
- Territorial Sea
  - Continental Shelf/EEZ
  - International Boundary

External Data Sources:  
Elsam A/S (Denmark)  
Rijks Waterstaat (NL)

Map Projection:  
Mercator (54°N), WGS 84  
BSH / M5 - 17.04.2012